



Maslins Beach Bus Route 2017



Willunga CHARTER
PTY LTD

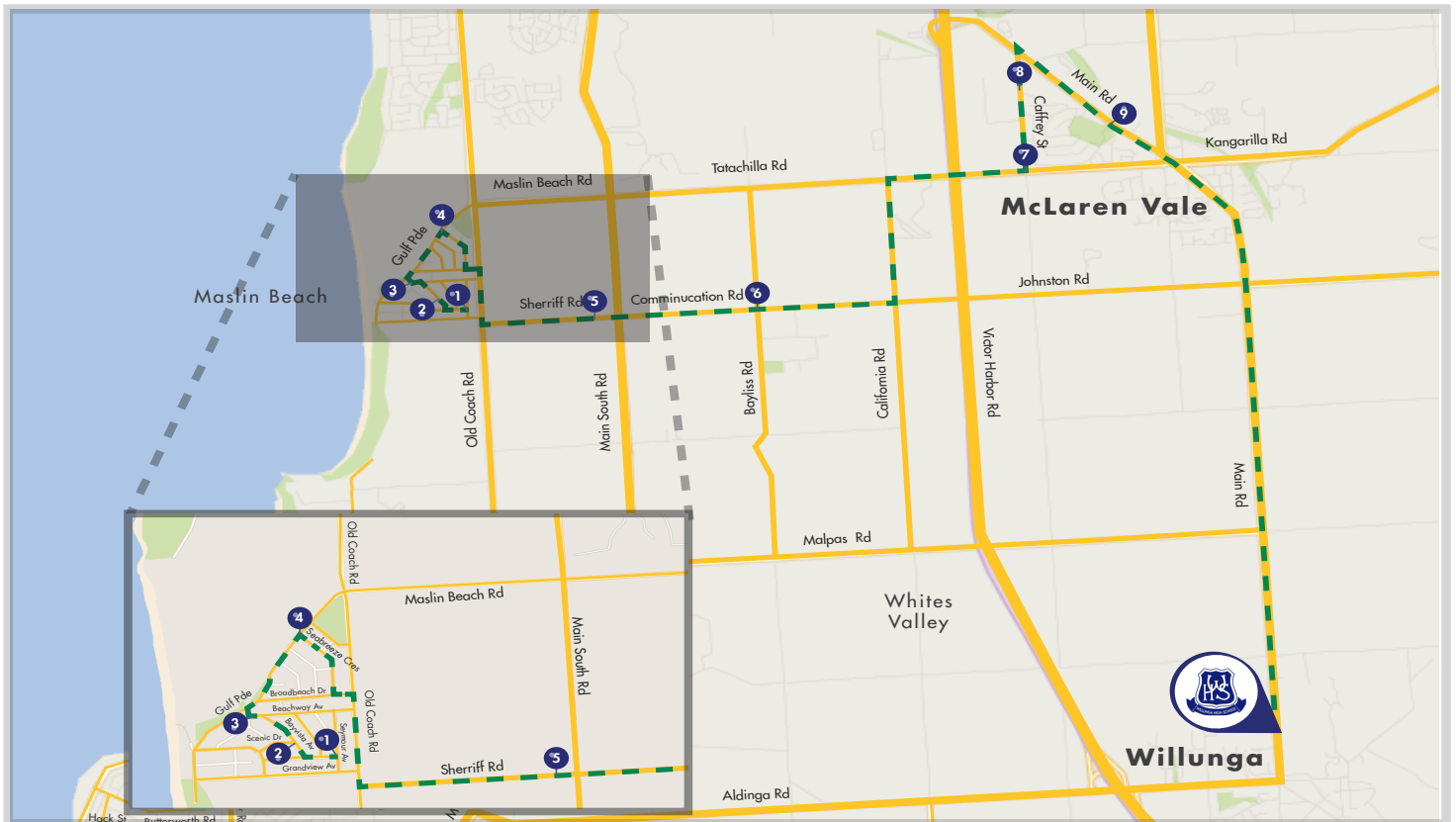
Where Do You Want To Go Today?™

STOP	LOCATION	AM	PM
1	Seymour Ave and Grandview Rd	7:58	3:35
2	Bayvista Ave and Scenic Dr	8:00	3:37
3	Seaview Ave and Beachway Ave	8:01	3:38
4	Gulf Pde adjacent Seabreeze Court	8:03	3:40
5	8 Sherriff Rd	8:05	3:32
6	Cnr Communication Rd and Bayliss Rd	8:10	3:30
7	Top End (South) of Caffrey St	8:15	3:25
8	McLaren Vale Primary School (Main Rd)	8:20	3:20
9	Southgate Building, Main Rd	8:22	3:18
	Willunga High School		3:10

Code of Conduct

The bus is an extension of the school classroom and therefore the School Behaviour Management Policy applies.

* Bus does not stop



All Our Buses are Air-Conditioned and Seat Belted!

SERVICE ENQUIRIES

Phone: 8556 2557
info@willungacharter.com.au

Published 24/11/2016

WILLUNGACHARTER.COM.AU

SCHOOL ENQUIRIES

Phone: 8557 0700
info@whs.sa.edu.au



Willunga High School

BUS ROUTES



Willunga **CHARTER**
PTY LTD

Where Do You Want To Go Today?™

Willunga High School in partnership with Willunga Charter Pty Ltd provide 16 modern seat belted and air conditioned school buses, that transport students to and from school and the outer lying areas of Aldinga, Blewitt Springs, Hope Forest, Maslin Beach, McLaren Flat, McLaren Vale, Myponga, Port Willunga and Sellicks Beach to Willunga High School.

To be eligible for travel on a Departmentally provided school bus to and from school, students must reside 5 kms or more by the shortest most practical route from the nearest appropriate Government school.

In addition to this extensive service, Southlink also offer a "user pays" service from the Noarlunga bus exchange for students living outside the designated bus service area. Further details are available by contacting Southlink on 8186 2888 or on the internet at www.adelaidemetro.com.au.

YOU HAVE A RIGHT TO:

- Travel by school bus as a right in accordance with certain policies and conditions
- Travel in safety
- Seek help when you feel unsafe on the school bus or at a bus stop

YOU HAVE A RESPONSIBILITY TO:

- Be on time for the bus pick up (at least 5 minutes before scheduled pick up time)
- Carry and show the driver your school bus pass each trip (Students without a pass will not be allowed to travel)
- Sit in your assigned seat and wear your seatbelt
- Place your bag in a safe place so that the aisle is kept clear
- Respect the needs and property of other bus users
- Not throw articles inside or outside the bus
- Keep your whole body inside the bus
- Not swear, use rude gestures or tease bus users or members of the public
- Respect bus property by not tampering, marking or damaging it
- Not distract the driver except in an emergency
- Listen and follow the instructions of the driver
- Speak to an adult if you have concerns about your safety

SCHOOL BUS RULES

- The driver is the person responsible for safety and discipline of students. Directions from the driver must be followed
- Student must be punctual to the pick up times published in the bus timetable (arrive 5 minutes prior to scheduled time)
- Students must enter and leave the bus in a safe and responsible manner – no pushing
- Students must not throw any object from the bus or have any part of their body outside the bus
- Students must conform with the same standard of behaviour as is expected in the school environment
- Students must alight the bus at their designated bus stop, unless written permission has been approved by the enrolling school
- Students must remain seated in their allocated seat at all times. Students must remain in their seat until the bus has stopped
- Students must wear their seatbelt at all times.
- Eating and drinking is not permitted on the bus at any time
- Students must not attempt to cross a road after alighting from a bus at a bus stop until the bus has left the stop and the view of traffic is clear
- Common courtesy between the students and the bus driver is expected at all times
- School bus passes must be shown each trip

The aim of the DECD Willunga High School Bus Service is for students to travel to their school in a safe and comfortable manner. The consequence of student misbehaviour may result in the student being suspended from using the bus services for a given time.

SERVICE ENQUIRIES

Phone: 8556 2557
info@willungacharter.com.au

WILLUNGACHARTER.COM.AU

SCHOOL ENQUIRIES

Phone: 8557 0700
info@whs.sa.edu.au